



SOLIDFORMS
CORPORATION

FORMWORK SYSTEMS



Ringlock System



Aluminum Formwork



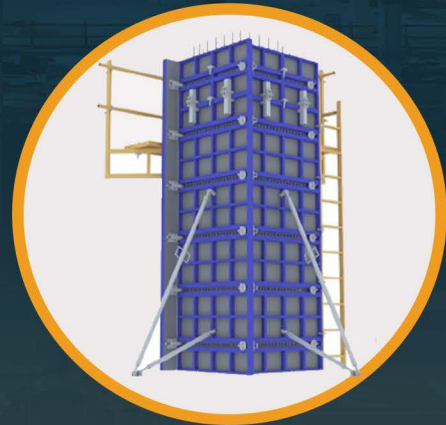
Floor Props & Folding Tripod



H-Frame



Aluminum Beams



B-Form

ACCESSORIES



U-Head



Base Jack



360° Swivel Clamp



Fixed Clamp




Flange Nut



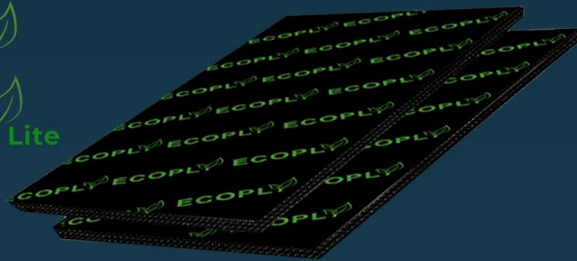
Tie Rod

PHENOLIC BOARDS

BRAND			
PRODUCT			
DIMENSION	1220mm x 2440mm		
THICKNESS	16 mm Gold	18 mm Platinum	12 mm Platinum
TOLERANCE	+/- 0.5 mm	+/- 0.5 mm	+/- 0.2 mm
CORE MATERIALS	Full Core	Full Core	Full Core
NO. OF PLYS	9 Plys	11 Plys	7 Plys
SURFACE FINISH	Smooth	Smooth	Smooth
GLUE	Melamine WBP	Melamine WBP	Melamine WBP
EDGE	Black Water Proof Paint	Black Water Proof Paint	Black Water Proof Paint
FILM	Black Film	Black Film	Black Film
MOISTURE CONTENT	10% - 12%	10% - 12%	10% - 12%
USAGE (Theoretical)	Up to 5-7 Times	Up to 6-8 Times	Up to 7 Times



ECOPLY
ECOPLY Lite



SOLIDPLY
PLATINUM & GOLD

G.I. PIPES



HEAD OFFICE

G/F Yupangco Building #1606 Trade Street
Corner Investment Drive, Madrigal
Business Park Alabang, Muntinlupa City
+63 917 545-1000 / +63 2 8293-7000

PAMPANGA BRANCH

Warehouse Building 10
Situated in Calulut-Panipuan Road
Brgy. Mexico, Pampanga
+63 917 715 3372

MANUFACTURING PLANT

Blk 10 L3 Cavite Light Industrial Park
Brgy. Maguyam, Silang, Cavite 4188

MAIN WAREHOUSE

Blk 8 L11 Cavite Light Industrial Park
Brgy. Maguyam, Silang, Cavite 4188

CEBU BRANCH

Warehouse 4, C.P. Batiller St., Umapad
Mandaue City, Cebu
+63 917 714 4900

ILOILO BRANCH

Aleoson Road, Brgy. Jibao-an
Pavia, Iloilo
+63 917 132-8236

DAVAO BRANCH

Eliiong Street, Brgy. Upper Tibungco
8000 Davao City
+63 917 621 9264

Website

www.solidforms.com.ph

Facebook - @SFCsolidformscorp

Instagram - @solidformscorp

Copyright 2025 - All Rights Reserved

February 2025