



Your **partner** in forming
best value **Solutions!**



**INNOVATIONS
INC.**

A Subsidiary of:

**SOLIDFORMS
CORPORATION**



MISSION

We are committed to:
Build a steadfast and sustainable relationship between our customers employees and shareholders.



VISION

We are a leading provider of quality and specialized aluminum forming systems and building materials in the Philippines.

CORE VALUES

- INTEGRITY :** We conduct business with unwavering integrity, maintaining honesty, transparency and ethical practices in every interaction.
- CREATIVITY :** We constantly innovate and collaborate with our local and global partners to provide our customers with the right products and solutions.
- RELIABILITY :** We deliver our products that consistently meet the highest standards of quality and performance.
- ENTHUSIAM :** We infuse enthusiasm into our work, creating an environment that inspires confidence in our clients and motivates us to go above and beyond.
- ADAPTABILITY :** We thrive on continuously evolving our products and services to address emerging challenges and opportunities in the construction sector.
- TENACITY :** We are committed to overcoming obstacles, finding solutions, and achieving success in every project. Our tenacious spirit drives us to persevere and excel.
- EXCELLENCE :** We continue to learn and implement quality standards in our products. We uphold a standard of excellence in all aspects of our business.



CORPORATE PROFILE

SFC Innovations Inc. (SFCII), an innovative subsidiary of **SolidForms Corporation**, engaging primarily in the trading (importation, selling, and distribution) of formworks systems and accessories, scaffolding and access solutions, phenolic boards, pipes, fittings, and heavy metals, as well as manufacturing of roofing, steel decking, light metal frames, and other related accessories. Elevating our commitment, we also offer comprehensive engineering design and technical support services tailored to the unique needs of our formworks and roofing clients.

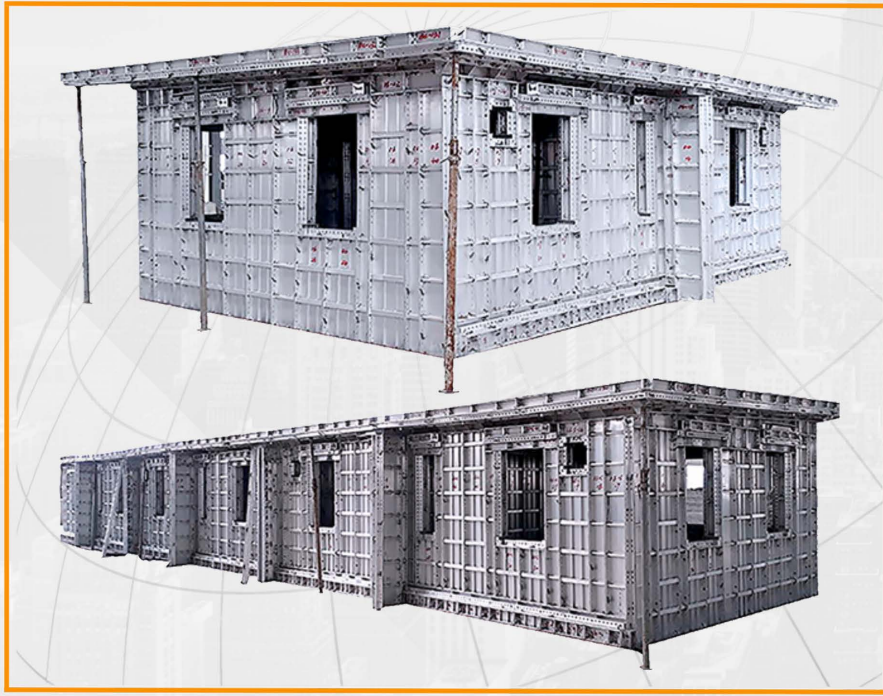
With a legacy of dependability and a forward-thinking approach, SolidForms Corporation (SFC), established on September 06, 2017, with the Securities and Exchange Commission per Registration No. CS20172918, stands as the driving force behind SFCII.

As **your partner in forming best value solutions**, we invite you to experience the synergy of quality construction materials and unparalleled technical expertise. Choose SFCII — where partnership meets innovation, and where your success is our priority. Your journey to superior construction solutions begins here!

TABLE OF CONTENTS

Aluminum Panel Form	04
Application	
Components	
Accessories	
Ringlock System & Accessories	06
G.I. Pipes	07
Frame System	08
Decking System	09
Floor Props and Folding Tripod	
Aluminum Beams	
Column & Wall Form System	10-11
Column & Wall Form Components	12
Phenolic Boards	13
SolidPly Platinum	
SolidPly Gold	
Ecoply	
Ecoply Lite	
Fiber Cement Board	14
GLOVASTEEL Roofing Materials	15
GlovaTile	
GlovaRib	
GlovaCorr	
GlovaDeck	
Light Metal Frames	16
Metal Track, Metal Stud, Metal Furring, Wall Angle, C-Purlins, C-Channel	
Bended Accessories & Hardware Accessories	
Structural Steel	17
Wide Flange, Channel Bar, Angular Bar, Flat Bar,	
Checkered Plate & MS PLate	
Projects & Clients	18-22

ALUMINUM PANEL FORM



RECOMMENDED

- For High Rise Buildings with monolithic pouring methodology for slabs and walls
- For condominium, housing developments with typical floor & wall layout

ADVANTAGES

- Reusable up to 300 times
- Easy to assemble
- Lightweight
- Customized design

APPLICATION



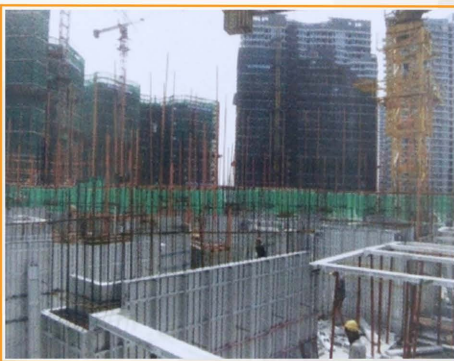
Exterior & Interior Walls



Staircase



Columns & Beams



Wall with Pilasters



Slabs & Beams



Rebars Assembly

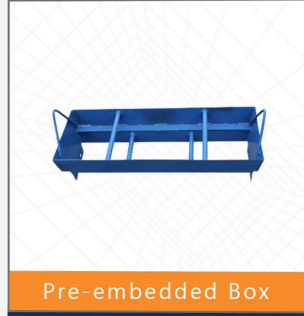
ALUMINUM PANEL FORM COMPONENTS



Kicker Panel



Middle Beam



Pre-embedded Box



Angle Bar



Beam Slab Arch



End Beam



End Beam of Wall Panel
Panel Cover



Prop Head



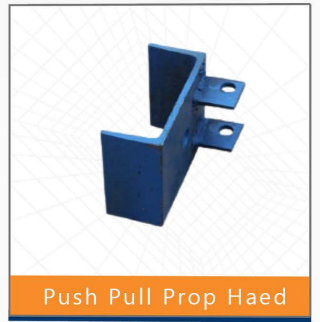
Prop Tube & Prop Base



Inner Corner



Joint Bar



Push Pull Prop Head

ACCESSORIES



Flat Tie



Round Pin & Wedge Pin

RINGLOCK SYSTEM



APPLICATIONS

- To access scaffolding
- For beam and slab support

ADVANTAGES

- Sturdy, thus making it stable and very safe to use even for high rise construction
- Reliable, supports various frame application activities
- Frame scaffolding has a high load capacity because of its high tensile strength
- Easy assembly and disassembly
- Flexibility due to ringlock that give wider options for bracing installation and adjustment.

ACCESSORIES

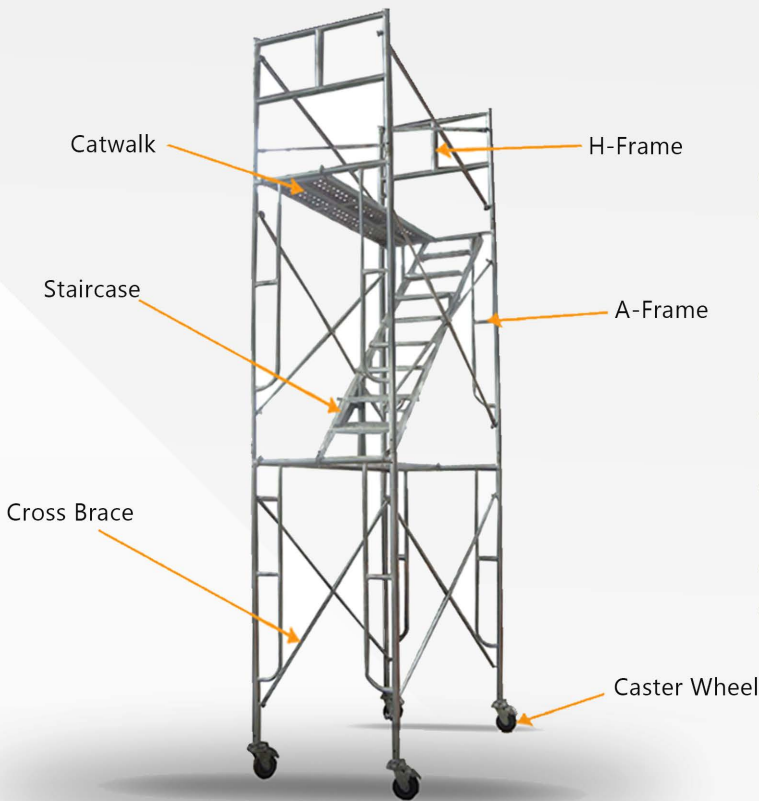


G.I. PIPES



Name	Size & Length
G.I Pipe Sch. 20	1 1/2" 10.39kgs @ 6m length
G.I Pipe Sch. 40	1 1/2" 14.36kgs @ 6m length
	1 1/2" 16.30kgs @ 6m length

FRAME SYSTEM



APPLICATIONS

- To access scaffolding
- For beam and slab support

ADVANTAGES

- Sturdy, thus making it stable and very safe to use
- Reliable, supports various frame application activities
- Frame scaffolding has a high load capacity because of its steel high tensile strength
- Easy assembly and disassembly
- Movable for faster convenient transferring and repositioning

COMPONENTS



A-Frame



H-Frame



Cross Brace



Staircase



Catwalk



Caster Wheel

DECKING SYSTEM



FLOOR PROPS & FOLDING TRIPOD

Three kinds of Floor props:

- Outer tube 60mm Φ with inner tube 78mm Φ (60/48)
- Outer tube 75mm Φ with inner tube 60mm Φ (75/60)
- Outer tube 88.5mm Φ with inner tube 75.5mm Φ (88.5/75.5)

USES

- Floor Props are used mainly for slabs and beams support

ADVANTAGES

- Easy to assemble and disassemble
- Convenient to store and to transport
- Economical and practical to use



ALUMINUM BEAMS

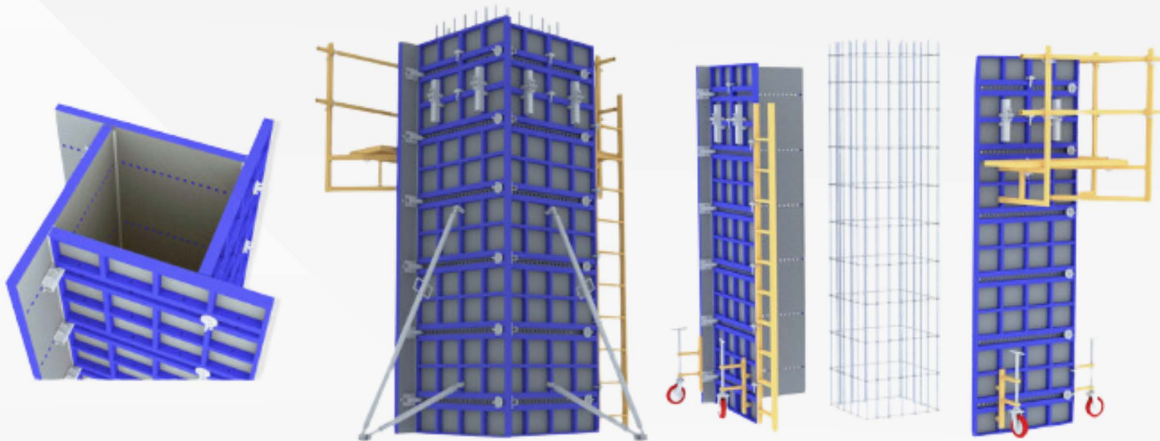
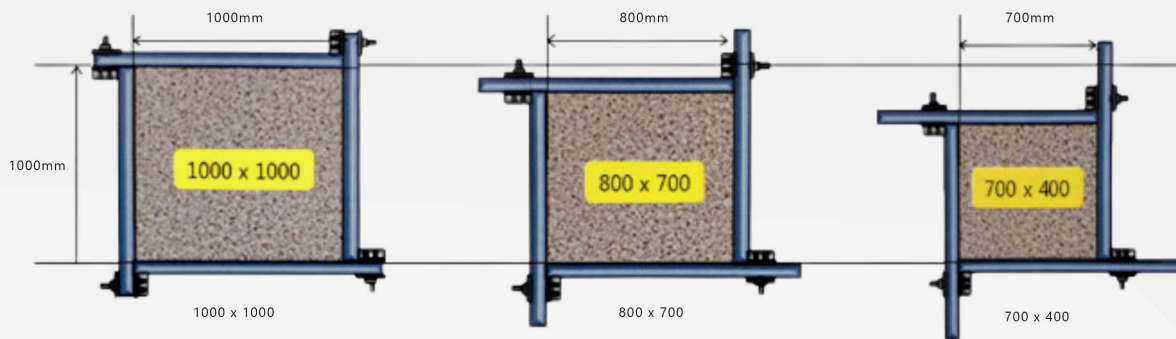
USES

- For floor and ceiling joists to reinforce structure strength
- Reinforce strength of structure for shoring as joist and stringers on top of other frame systems including form boards. For wall forming as joist either in a vertical or horizontal configuration

ADVANTAGES

- Versatile and multiple application for slab, columns, beams and for walls
- Lightweight, heat treatable and easy to weld
- High strength
- High corrosion resistance
- Easy maintenance
- Reduces construction time

COLUMN & WALL FORM SYSTEM



Size adjustable for different column dimensions



USES

- Column Form, Double Sided Wallform & Single Sided wallform

ADVANTAGES

- Minimal Manpower: Only 3-4 skilled workers are needed for assembly
- Ease of transfer: Assembled formworks can be moved to another location without totally disassembling the whole formworks
- Versatile: Panels are adjustable and can conform to various types and size of columns, minimizing the form & sizes of panels to maintain
- Reduced after treatment work: Concrete surface is smooth and even a perfect surface, minimizing concrete finishing work



COLUMN & WALL FORM SYSTEM COMPONENTS



Internal Corner



Chamfer Strip



Crane Hook



External Corner Design



Infill Material Connector



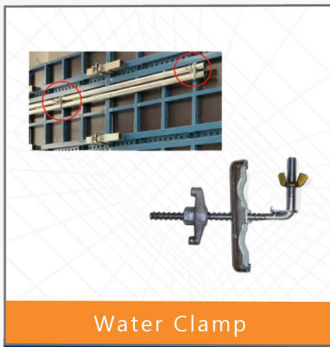
Infill Clamp



Standard Clamp



Support Connector



Water Clamp



Push Pull Prop



Rebar Regulator



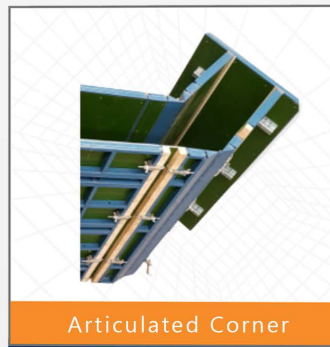
Wheel Caster



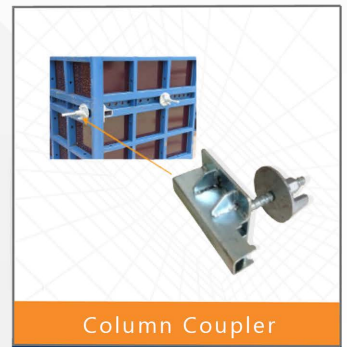
Working Platform



Alignment Coupler




Articulated Corner



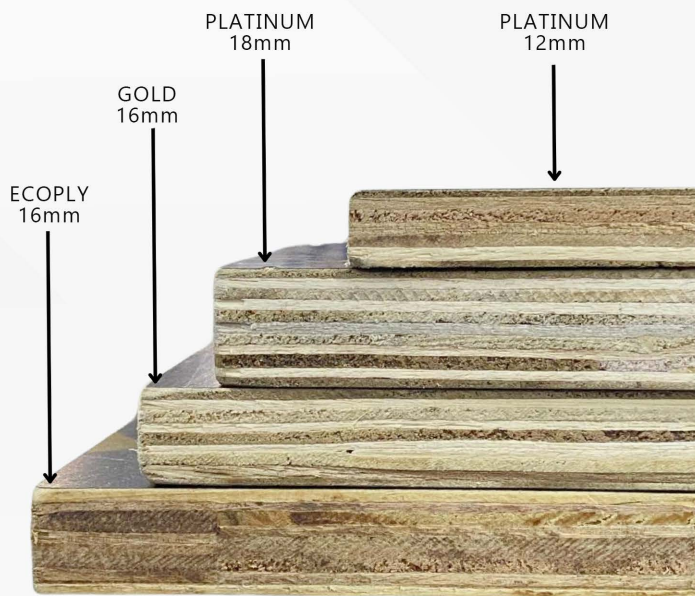
Column Coupler

PHENOLIC BOARDS

BRAND			
PRODUCT	1220mm x 2440mm		
DIMENSION	1220mm x 2440mm		
THICKNESS	16 mm Gold	18 mm Platinum	12 mm Platinum
TOLERANCE	+/- 0.5 mm	+/- 0.5 mm	+/- 0.2 mm
CORE MATERIALS	Full Core	Full Core	Full Core
NO. OF PLYS	9 Plys	11 Plys	7 Plys
SURFACE FINISH	Smooth	Smooth	Smooth
GLUE	Melamine WBP	Melamine WBP	Melamine WBP
EDGE	Black Water Proof Paint	Black Water Proof Paint	Black Water Proof Paint
FILM	Black Film	Black Film	Black Film
MOISTURE CONTENT	10% - 12%	10% - 12%	10% - 12%
USAGE (Theoretical)	Up to 5-7 Times	Up to 6-8 Times	Up to 7 Times



SOLIDPLY PLATINUM & GOLD



BRAND	
PRODUCT	ECOPLY
DIMENSION	1220mm x 2440mm (4'x8')
THICKNESS	(3/4")
TOLERANCE	+/- 0.5 mm
CORE MATERIALS	Finger Joint
NO. OF PLYS	11 Plys
SURFACE FINISH	Smooth
GLUE	Melamine WBP
EDGE	Black Water Proof Paint
FILM	Black Film
MOISTURE CONTENT	10% - 12%
USAGE (Theoretical)	Up to 2-3 Times



ECOPLY 

ECOPLY  Lite

HB HERA BOARD

By:  SFC GROUP



FIBER CEMENT BOARD



FIBER CEMENT BOARD

ADVANTAGES

- **HERA BOARD** is an asbestos free fiber reinforced cement board which is safe for health and environment-friendly. It is lightweight, resistant to humidity and strong.
- It is also resistant to fungus and termites that makes maintenance easy and ensures durability of building components.
- It has smooth surface finish on both sides that it could be painted directly without having to polish the board first.
- Easy to handle and apply, translating to savings during installation.
- **HERA BOARD** has passed the following test:
 - a.) **Fire Resistant**, based on the result of the test SNI 1741-2008, September 8th 2015
 - b.) **Sound Insulation**, Puslitbangkim
 - c.) **Non Asbestos** (Report Number: 321/KS/PNBP/X/2015) from the Indonesian Institute of Sciences.

PRODUCT INFORMATION

A. The Features and benefits of HERA BOARD

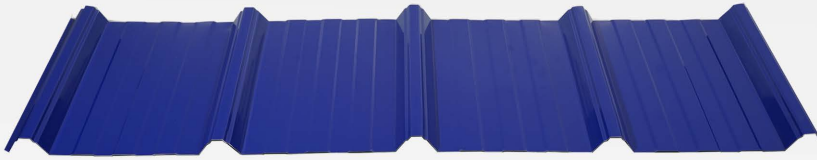
HERA BOARD is a versatile product that is highly recommended for any residential, commercial, institutional, and industrial applications not exposed to weather such as interior wall partitions, interior ceilings and roof eaves. With an incredibly smooth surface on both sides, lightweight, resistant to humidity and strong, finishing is with ease.

Hera Board, Your Smart Choice!

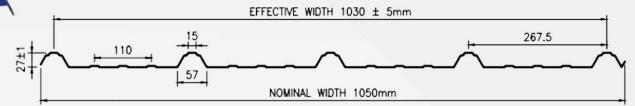
B. Size and Application

Size (mm) T x W x L	Weight (kg)	Application
3.5 x 1220 x 2440 mm	17	Ceiling
4.5 x 1220 x 2440 mm	21.5	Ceiling/Partition
6 x 1220 x 2440 / 3000 mm	28/34	Ceiling/Partition

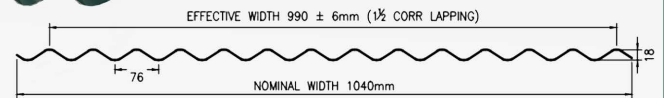
GLOVASTEEL ROOFING MATERIALS



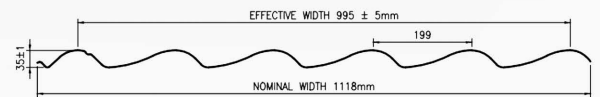
GLOVARib



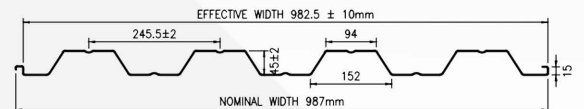
GLOVACorr



GLOVATile



GLOVADeck



Available Colors

(The colours specified may slightly vary from actual finished product)



Product Specification

BASE METAL: Cold rolled steel 40,000 PSI to 80,000 PSI

ZINC COATING: 30g/sqm to 50 g/sqm

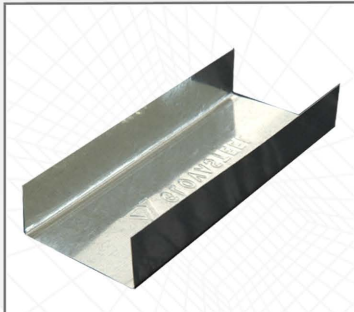
COLOR COATING: Top Coat - 15 to 20 microns

THICKNESS: Roofing - 0.4mm, 0.5mm, 0.6mm
Light Metal Framing - 0.4mm, 0.5mm,
0.6mm, 0.8mm

Steel Decking - 0.8mm, 1.0mm, 1.2mm

LENGTH: Standard / Client's Specification

LIGHT METAL FRAMES



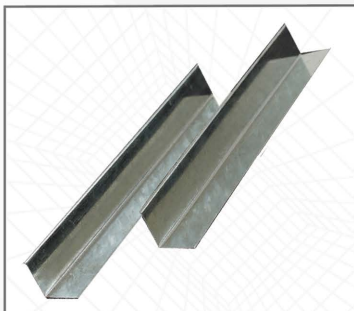
Metal Track



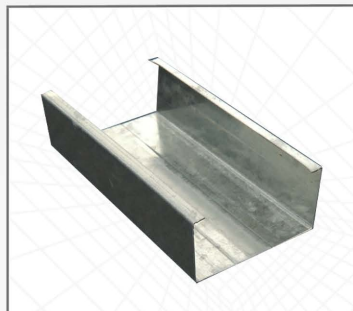
Metal Stud



Metal Furring



Wall Angle



C-Purlins

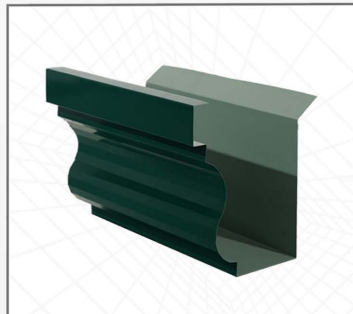


C-Channel

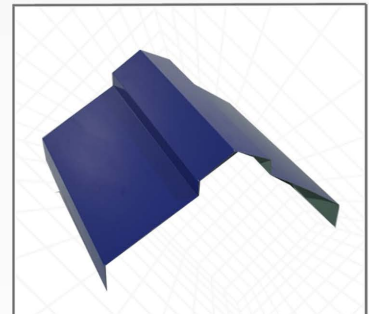
BENDED ACCESSORIES



Flashing



Gutter



Ridge Roll

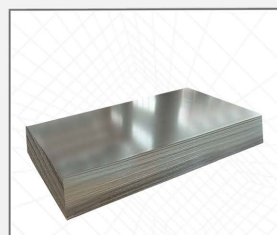
HARDWARE ACCESSORIES



Blind Rivets



Tek screw

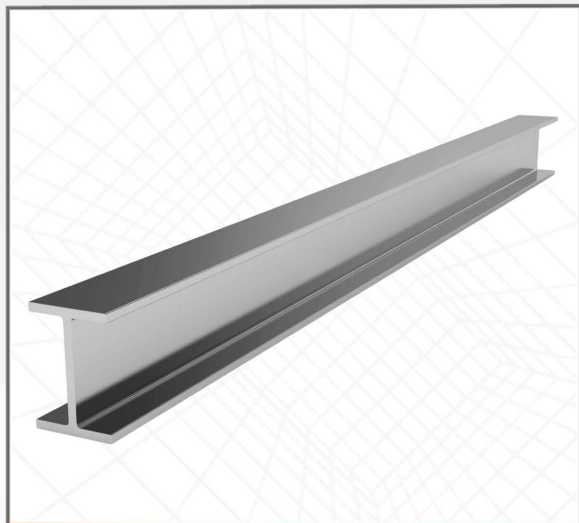


Plain Sheet



P.E. Insulation Foam

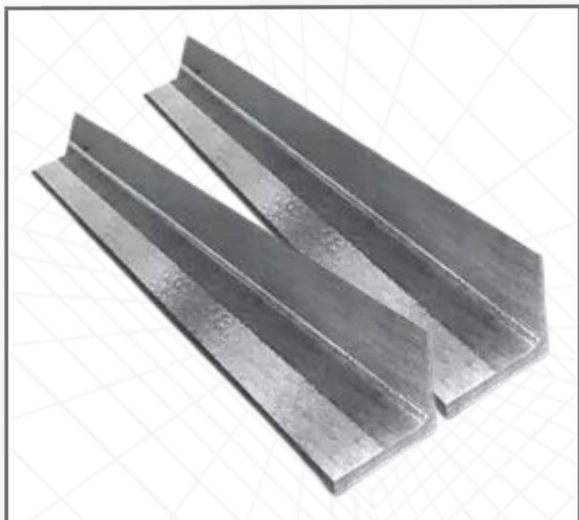
STRUCTURAL STEEL



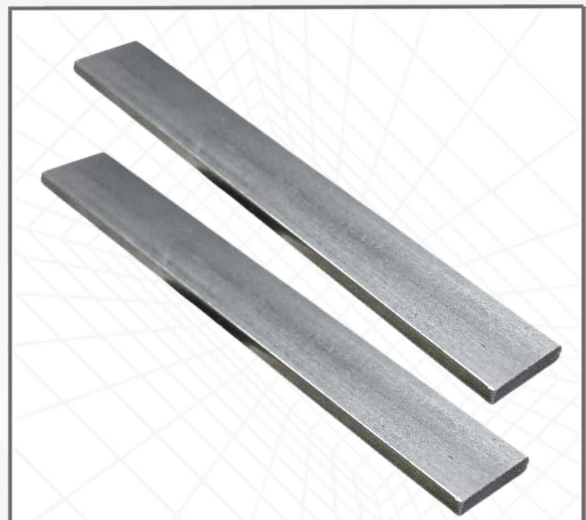
Wide Flange



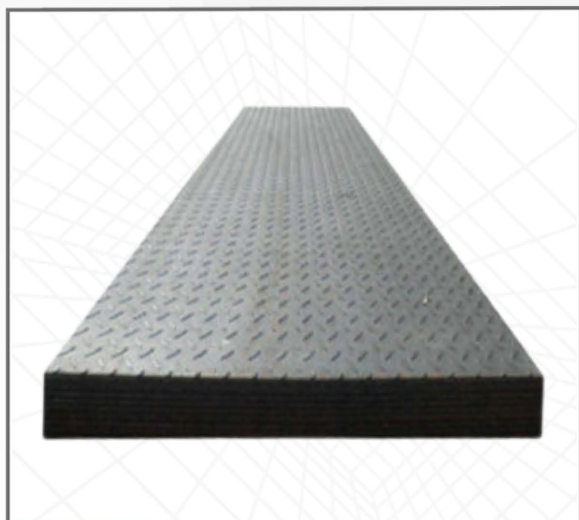
Channel Bar



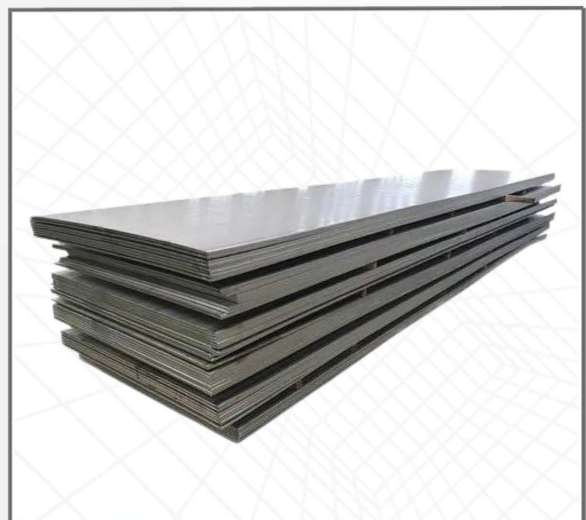
Angular Bar



Flat Bar



Chekered Plate



MS Plate

PROJECTS & CLIENTS



Panglao Oasis - Building Daloy



CEBU Cordova Link Expressway



Futura East - Building B



Bali Oasis



Mactan Plains Residences



Alta Spatial - Acacia Building



Belize Oasis - Building Azul



One University Residences



Futura Centro - Building A



Futura Centro - Building B



Chinese General Hospital



Verde Spatial



The Cerise Tower



Futura Monte



Maldives Aspire - Building A



Futura Homes Koronadal



Valle Dulce - Danessa Units



Ventura Real - Sapphire Units

FILINVEST
LAND, INCORPORATED

 **DREAMBUILDERS PRO, INC.**

 **DURAWOOD**
CONSTRUCTION & LUMBER SUPPLY, INC.

PMI
PREMIUM MEGASTRUCTURES INC.

 **STA. LUCIA**
LAND INC.

 **MONOCRETE**
REALTY AND DEVELOPMENT CORPORATION

 **E.F. CHUA CONSTRUCTION, INC.**

 **acciona**
Construction

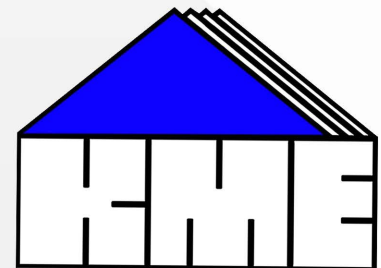



New San Jose Builders, Inc.




DEVELOPMENT & CONSTRUCTION
CORPORATION


SBT CONSTRUCTION





HEAD OFFICE

G/F Yupangco Building #1606 Trade St.,
Corner Investment Drive, Madrigal
Business Park, Alabang, Muntinlupa City

+63 917 545 1000
+63 2 8293 7000

MAIN WARE HOUSE

Blk 8, Lot 11, Cavite Light Industrial
Park Brgy. Maguyam, Silang, Cavite
4118

+63 917 864 8237
+63 046 866 7369

MANUFACTURING

Blk 10, Lot 3 Cavite Light Industrial
Park, Brgy. Maguyam, Silang, Cavite
4118

+63 917 864 8237
+63 46 481 6499

BRANCHES

CEBU

Warehouse 4, Noel Street
Mohon, Talisay City
6045 Cebu
+63 917 709 7177

DAVAO

Eliong Street, Brgy. Upper
Tibungco, 8000 Davao City
+63 917 621 9264
+63 917 714 4900

ILOILO

Aleosan Road
Brgy. Jibao-an
Pavia 5001, Iloilo
+63 917 132 8236

PAMPANGA

Warehouse Building 10
Sited in Calulut-Panipuan Road
Brgy. Mexico, 2021 Pampanga
+63 917 711 2330

www.sfcii.com.ph



@SFCInnovationsInc



@sfcinnovationsinc

Copyright 2024 - All Rights Reserved
April 2024

SCAN ME



SFCII BROCHURE

SCAN ME



SFCII LEAFLET

SCAN ME



SFCII - GLOVASTEEL LEAFLET