



INNOVATIONS INC.

FORMWORK SYSTEMS



Ringlock System



Aluminum Formwork



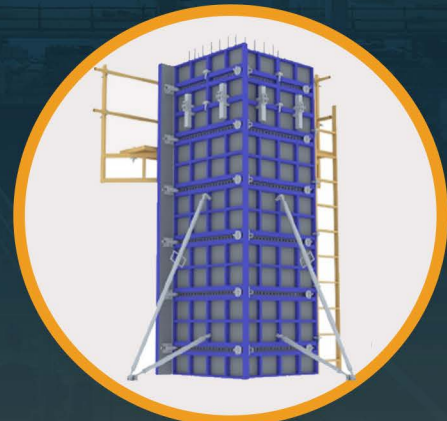
Floor Props & Folding Tripod



H-Frame



Aluminum Beams



B-Form

ACCESSORIES



U-Head



Base Jack




360° Swivel Clamp



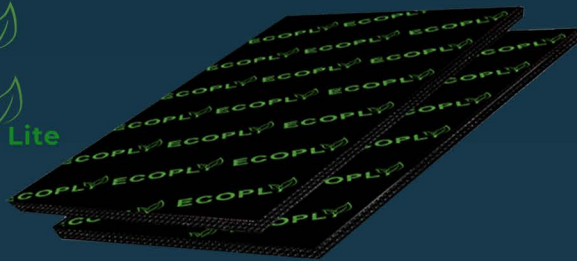
Fixed Clamp

PHENOLIC BOARDS

BRAND			
PRODUCT			
DIMENSION	1220mm x 2440mm (4' / 8')		
THICKNESS	(3/4") Gold	(3/4") Platinum	(1/2") Platinum
TOLERANCE	+/- 0.5 mm	+/- 0.5 mm	+/- 0.2 mm
CORE MATERIALS	Full Core	Full Core	Full Core
NO. OF PLYS	11 Plys	11 Plys	7 Plys
SURFACE FINISH	Smooth	Smooth	Smooth
GLUE	Melamine WBP	Melamine WBP	Melamine WBP
EDGE	Black Water Proof Paint	Black Water Proof Paint	Black Water Proof Paint
FILM	Black Film	Black Film	Black Film
MOISTURE CONTENT	10% - 12%	10% - 12%	10% - 12%
USAGE (Theoretical)	Up to 5-7 Times	Up to 6-8 Times	Up to 7 Times

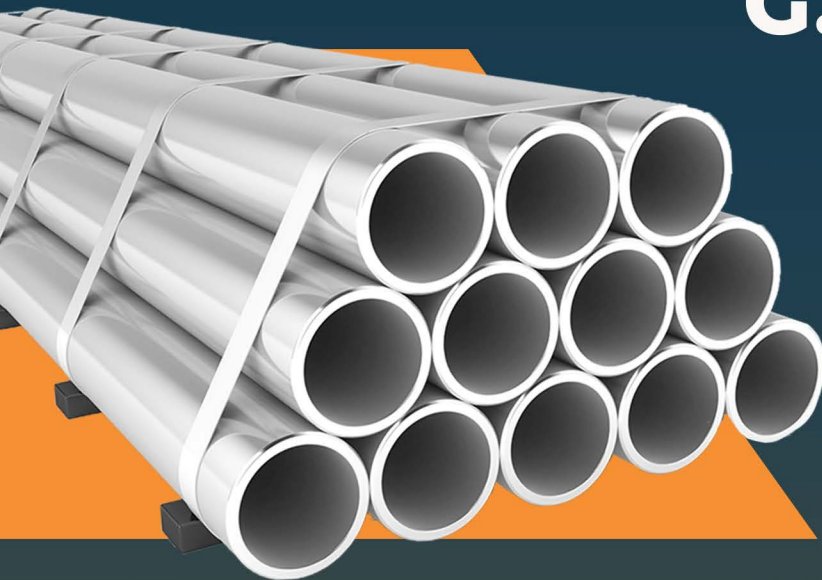


ECOPLY
ECOPLY Lite



SOLIDPLY
PLATINUM & GOLD

G.I. PIPES



HEAD OFFICE

G/F Yupangco Building #1606 Trade Street
Corner Investment Drive, Madrigal
Business Park Alabang, Muntinlupa City
+63 917 545-1000 / +63 2 8293-7000

PAMPANGA BRANCH

Warehouse Building 10
Situating in Calulut-Panipuan Road
Brgy. Mexico, Pampanga
+63 917 715 3372

MANUFACTURING PLANT

Blk 10 L3 Cavite Light Industrial Park
Brgy. Maguyam, Silang, Cavite 4188

MAIN WAREHOUSE

Blk 8 L11 Cavite Light Industrial Park
Brgy. Maguyam, Silang, Cavite 4188

CEBU BRANCH

Warehouse 9, J. Pepito Street
Purok Molave, Brgy. Tayud, Liloan,
Cebu 6002
+63 917 714 4900

DAVAO BRANCH

Purok 6, KM 20, Buhisan
Brgy. Tibungco, Davao City 8000
+63 917 621 9264